



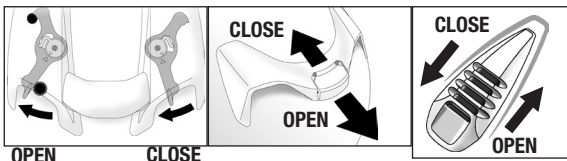
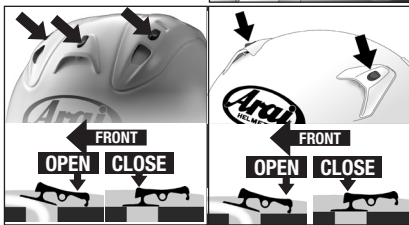
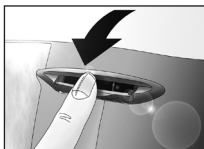
*there is a difference*

INSTRUCTIONS FOR USE READ THIS BOOKLET BEFORE USE!

**OPEN FACE SERIES**

**CONTENTS**

To open/close shield .....	4
To operate browvents .....	4
To operate top vents .....	4
To remove/replace shield .....	6
(X-TEND / X-TEND RAM / XC / XC RAM / SZ-RAM4 / SZ-URBAN)	
To remove/replace shield holding arms.....	8
(X-TEND / X-TEND RAM / XC / XC RAM / SZ-RAM4 / SZ-URBAN)	
To remove/replace shield/peak .....	10
(X-TEND CT / X-TEND RAM CT / CT-Z)	
To remove/replace cheekpads / earcups .....	14
X-TEND / X-TEND CT / X-TEND RAM / X-TEND RAM CT / XC / XC-RAM / CT-Z	
To remove/replace chinstrap covers.....	20
(X-TEND RAM / X-TEND RAM CT / XC-RAM / CT-Z [ except CT-Z for Australia ] )	
To remove/replace comfort lining .....	26
(X-TEND RAM / X-TEND RAM CT / XC-RAM / CT-Z [ except CT-Z for Australia ] )	



## English

### TO OPEN/CLOSE SHIELD

Pull outward on lower left side of shield to release latch system and then raise the shield. To close the shield, push down the shield until the shield is fully latched

#### **WARNING:**

If your shield becomes too scratched or uncleanable, replace it with a new one. Impaired visibility causes accidents. Use a solution of mild soap or detergent and lukewarm water to clean your shield. Rinse well with clean water, and wipe off with a soft cloth. Never use petrol, thinner, benzene or any other solvents. There are many "aggressive" cleaners on the market, including some supposed to be specifically for use on shield. Arai strongly recommends that you do not use any such products to clean your shield as some of their ingredients may have damaging effects on the shield and other plastic parts installed on your helmet. Do not apply stickers or adhesive tape to the shield, as this will weaken the hard coating. If tinted, the shield is for daylight use only.

### TO OPERATE BROWVENTS

The Browvents are operated from fully closed through intermediate, to fully open positions by simply pulling the vent control down to open, pushing up to close.

### TO OPERATE TOP VENTS

Simply push the switches/levers on each vent to open/close the vents.

**TO REMOVE/REPLACE SHIELD**

**X-TEND / X-TEND RAM / XC / XC RAM / SZ-RAM4 / SZ-URBAN**

To remove the shield, first place it in the fully open position. When the shield is in its fully open position, levers appear under the shield holding arms. With your thumb or a rod like a ballpoint pen push these levers straight forward in the arrowed direction until they stop (about 5mm, 1/8”), which releases the locking system. Then, raise the shield further to remove shield assembly from helmet.

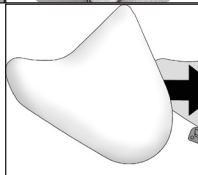
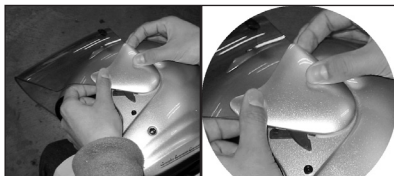
**NOTE:**

The shield cannot be removed from any other position as the locking system will be engaged.

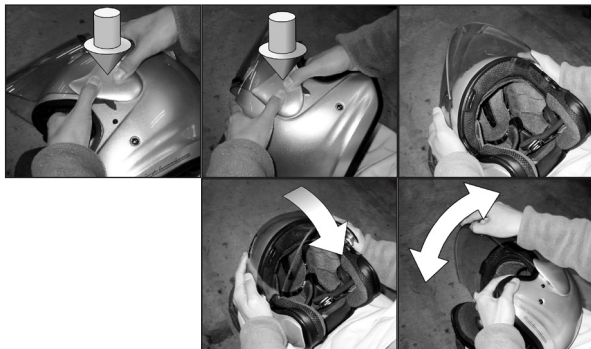
To replace shield, place each shield holding arm onto base plate on each side so that the lower edge of the arm on each side lines up with the guide line marked on each base plate.

**NOTE:**

The shield can only be replaced at its remove/replace position. Check its angle as you remove the shield and duplicate it to replace the shield.

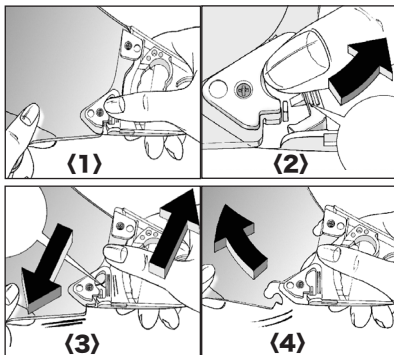


## English



Push firmly inward on the shield holding arms until you hear them click into place.

Lower the shield past the normal upper stops, and test operation. If the shield does not seem to work properly, remove and gently reinstall it again.

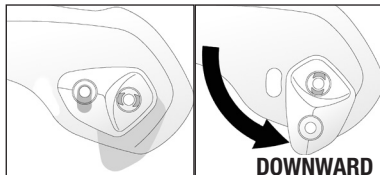
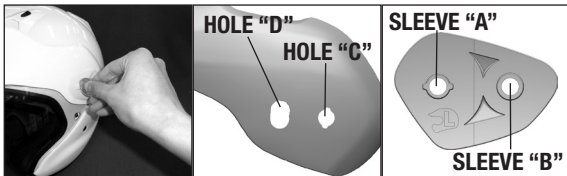
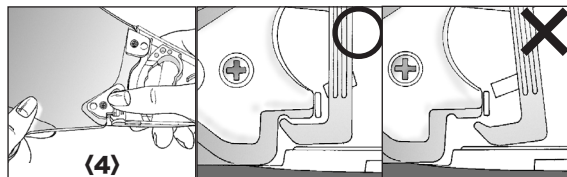
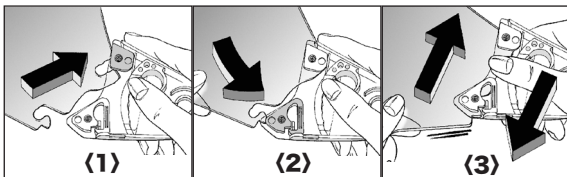


## TO REMOVE/REPLACE SHIELD HOLDING ARMS

### X-TEND / X-TEND RAM / XC / XC RAM / SZ-RAM4 / SZ-URBAN

To take the shield holding arms off the shield, remove shield as per previous instruction. Hold the shield/shield holding arms as illustrated <1>. Push back the lock lever at the lower bracket of the shield holding arm as illustrated <2> until it stops releasing the lock system. Then slide the shield holding arm upward <3>, and remove the shield as illustrated <4>. Repeat for the other side.

## English



To replace the shield holding arms, first slip the upper slot of the shield into the upper bracket of the shield holding arm <1>, next slip the lower slot of the shield into the lower bracket of the shield holding arm <2>, then slide the shield holding arm downward until it is fully snapped into place <3>. Be sure the lock lever at the lower bracket returns to the correct position as illustrated <4>.

### WARNING:

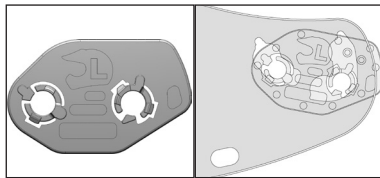
if the lock lever at the lower bracket is not in the correct position the shield may come off when you try to replace the shield or when you operate your motorcycle.

## TO REMOVE/REPLACE SHIELD/PEAK

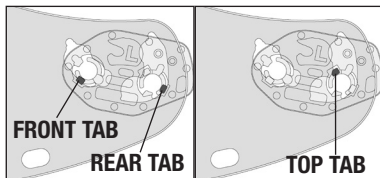
### X-TEND CT / X-TEND RAM CT / CT-Z

To remove shield/peak, remove two screws from each side of the peak with flat blade screwdriver or coin. Please note that the pressure plate is attached to the peak at the rear hole "C". In order to remove the pressure plate, rotate the front sleeve "B" downward until the rear sleeve "A" releases.

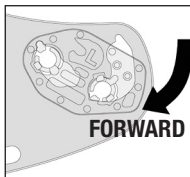
## English



To replace shield/peak, with the parts off the helmet, place the base plate under the shield in the position as illustrated (note that the L & R embossed on the base plate indicate Left and Right on the helmet when the helmet is worn).

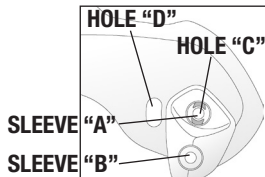


Push in the 3 tabs of the base plate into the sliding slot of the shield in order of rear, front and top tabs as illustrated.



Rotate/slide the base plate forward until it stops in the sliding slot of the shield.

Repeat for the other side.



To install peak pressure plates (if they have been removed from the peak), position the sleeve A of the pressure plate on the hole C of the peak as illustrated (note that the L & R embossed on the pressure plate indicate Left and Right on the helmet when the helmet is worn) so that the two tabs in sleeve A align with the corresponding cutouts in hole C.

## English

With gentle pressure, rotate the pressure plate as illustrated ensuring that the two tabs in sleeve A engage the tracks in hole C. Use care so as not to scratch the painted surface of the peak while rotating the pressure plate. Once the pressure plate is rotated into proper position, sleeve B will fall into place within hole D.

Repeat for the other side.

Place the shield / base plate assembly in the helmet so that the two screw holes line up and the latch pin on the left side of the helmet is in the latch hole of the shield. Then, place the peak / pressure plate over the shield so that the two screw holes line up. Install the two screws through each pressure plate into the helmet and tighten with flat blade screwdriver or coin. Do not over tighten.

Work the shield up and down to check the operation.

## TO REMOVE/REPLACE CHEEKPADS/ EARCUPS

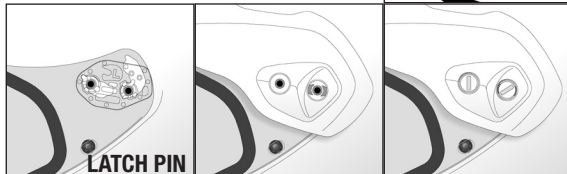
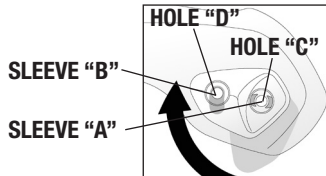
When first servicing the cheekpads, it is suggested that you do only one at a time so that the other can be used as a reinstallation guide.

### X-TEND / X-TEND CT / X-TEND RAM / X-TEND RAM CT / XC / XC-RAM / CT-Z

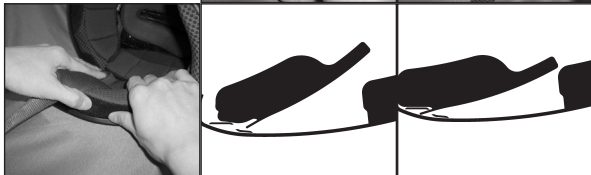
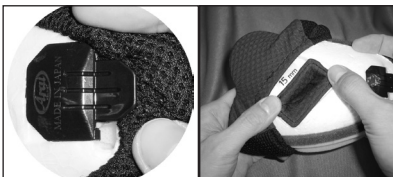
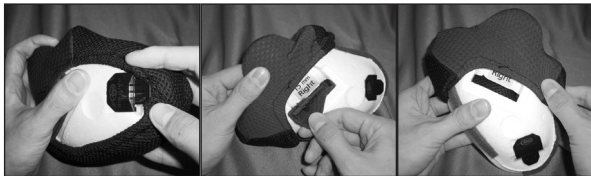
To remove the cheekpads, first undo chinstrap. Pull the pad toward the front of the helmet, then inward to release and slide it off the strap.

To take off the fabric covering for washing, peel the covering off over the front edge of the cheekpad assembly until all the fabric is on the face side surface. Then draw the rectangular collar through the opening by rotating the collar vertically and putting into the opening.

To wash fabric coverings, put them into lukewarm water with small amount of laundry soap or your own shampoo and wash gently by hand. Rinse well with fresh water and wipe off with a soft cloth. Dry them in the shade at ambient temperature.







## English

### **WARNING:**

Never use petrol, thinner, benzene or any other solvents.

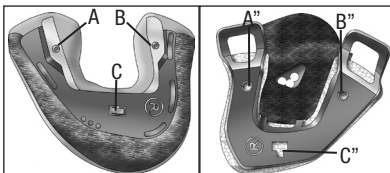
To replace the fabric covering, ensure it is turned right side out, and stretch the covering over the rear edge of the cheekpad assembly. Then push the rectangular collar through the pad assembly and place it in position. Stretch the rest of the covering over the front part of the cheekpad assembly making sure to leave the tab outside the fabric covering. Adjust the covering to lie smoothly.

To replace cheekpad in helmet, slip pad onto strap. Then place the tab at the front into the slot on the helmet side. Push the rear part of pad until the pad is fully home. Pull the chinstrap to check possible chinstrap play in the cheekpad.

## English

### SZ-RAM4 / SZ-URBAN

The earcups are secured to their base plates by bosses A & B and C.

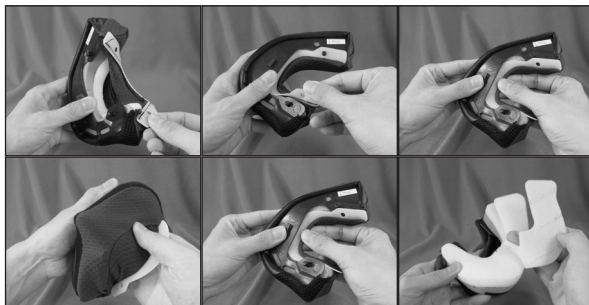


To remove earcup, first undo chinstraps, then remove bosses A & B from its base plate by grasping upper part of earcup on one side and pulling toward you until a snap is heard, then do the other side of the same earcup.

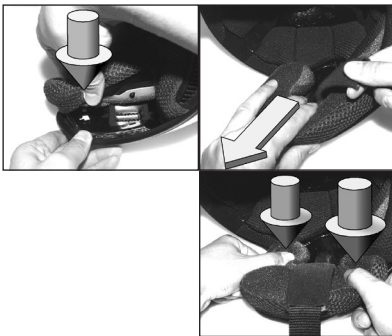
When both sides are free, push lower part of earcup forward and pull upward to release tab C.

To wash earcups, put them into lukewarm water with small amount of laundry soap or your own shampoo and wash gently by hand. Rinse well with fresh water and wipe off with a soft cloth. Dry them in shade at ambient temperature.

SZ-RAM4 earcup is equipped with a 5mm surface foam layer. The layer is removable to offer a bit more room if desired. To remove layer, remove white frame from two bosses of the earcup on backside, and pull frame out from earcup. Turn frame over to expose layer. Gently remove the layer. Stretch cover over pad and into place, adjusting it to lie smoothly. Slide white frame into receptacle of the earcup and push the rest into two bosses.



## English



To replace earcup (note that the L & R embossed on the cup bases indicate Left and Right inside of the helmet when the helmet is worn), push the lower tab C into its receptacle and pull downward until it is fully snapped into place.

Ensuring that the strap is in the correct position, place two top tabs A & B over their receptacles and push them home until a snap is heard from each and work the strap fully into position.



## TO REMOVE/REPLACE CHINSTRAP COVERS

### X-TEND RAM / X-TEND RAM CT / XC-RAM / CT-Z ( except CT-Z for Australia )

To remove the chinstrap covers, first remove the cheekpads as per previous instructions.

Remove the plastic chinstrap anchor cover from the steel chinstrap anchor and slide the cover off the chinstrap.

Note the right and left, inside and outside of the chinstrap covers for replacement.

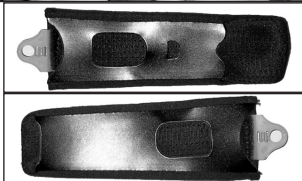
To wash the chinstrap covers, put them into lukewarm water with small amount of laundry soap or your own shampoo and wash gently by hand. Rinse well with fresh water and wipe off with a soft cloth. Dry them in the shade at ambient temperature.

### **WARNING:**

Never use petrol, thinner, benzene or any other solvents.

Left chinstrap cover (D-ring side)  
Couvercle gauche de la jugulaire  
(côté anneau en forme de D)  
Linke Kinnriemenabdeckung (D-Ring-Seite)

Right chinstrap cover (long side)  
Couvercle droit de la jugulaire (côté long)  
Rechte Kinnriemenabdeckung (lange Seite)



## English



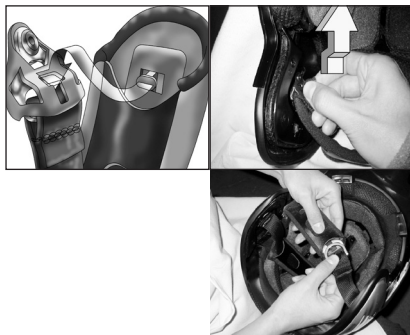
To replace the left chinstrap cover (D-ring side), ensure the female chinstrap end snap side of the chinstrap and the leatherette side of the chinstrap cover both face outward, slip the chinstrap cover onto the chinstrap.

Position the plastic chinstrap anchor cover over the steel anchor and push the cover in the anchor until the tab on the back of the cover snaps fully home.



To replace the right chinstrap cover (long side), ensure the cap side of the chinstrap end snap (Arai logo impressed) on the chinstrap and the leatherette side of the chinstrap cover both face outward, slip the chinstrap cover onto the chinstrap.

Position the plastic chinstrap anchor cover over the steel anchor and push the cover in the anchor until the tab on the back of the cover snaps fully home.



### SZ-RAM4

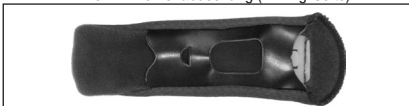
The chinstrap cover is secured to its base plate over the chinstrap anchor by the tab. Push tab upward to release it from the base plate. Slide the cover off the strap.

Note the right and left, inside and outside of the chinstrap covers for replacement.

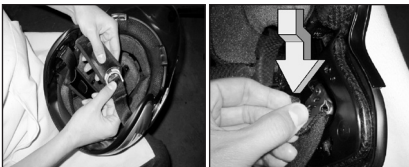
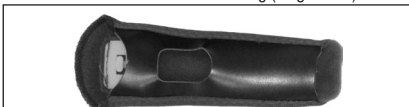
To wash the chinstrap covers, put them into lukewarm water with small amount of laundry soap or your own shampoo and wash gently by hand. Rinse well with fresh water and wipe off with a soft cloth. Dry them in the shade at ambient temperature.

## English

Left chinstrap cover (D-ring side)  
Couvercle gauche de la jugulaire (côté anneau en forme de D)  
Linke Kinnriemenabdeckung (D-Ring-Seite)



Right chinstrap cover (long side)  
Couvercle droit de la jugulaire (côté long)  
Rechte Kinnriemenabdeckung (lange Seite)



### WARNING:

Never use petrol, thinner, benzene or any other solvents.

To replace the left chinstrap cover (D-ring side), ensure the female chinstrap end snap side of the chinstrap and the leatherette side of the chinstrap cover both face outward, slip the chinstrap cover onto the chinstrap.

Position the tab on the chinstrap cover over the base plate on the chinstrap anchor. Push tab into its receptacle and pull the strap cover downward until it is fully snapped into place.

To replace the right chinstrap cover (long side), ensure the cap side of the chinstrap end snap (Arai logo impressed) on the chinstrap and the leatherette side of the chinstrap cover both face outward, slip the chinstrap cover onto the chinstrap.

Position the tab on the chinstrap cover over the base plate on the chinstrap anchor. Push tab into its receptacle and pull the strap cover downward until it is fully snapped into place.

## English

### TO REMOVE/REPLACE COMFORT LINING

#### X-TEND RAM / X-TEND RAM CT / XC-RAM / CT-Z ( except CT-Z for Australia )

The comfort lining is secured to the helmet by 4 plastic bosses.

To remove the lining, undo 4 bosses by grasping the lining as close to each boss as possible and pulling straight up. Note the fore & back, top & bottom sides of the lining for replacement.

SZ-RAM4 lining is equipped with removable temple pads to offer a bit more room if desired. To remove pads, open the pocket on each side of the lining and gently remove pad from the pocket. If you wish to replace them in the pockets, use double sided tape to fix them in place.

To wash the comfort lining, put it into lukewarm water with small amount of laundry soap or your own shampoo and wash gently by hand. Rinse well with fresh water and wipe off with a soft cloth. Dry it in the shade at ambient temperature.

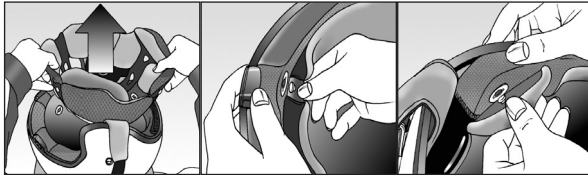
#### **WARNING:**

Never use petrol, thinner, benzene or any other solvents.

To replace the lining, place the 4 bosses over their plastic receptacles and push them home.

#### **WARNING:**

When reinstalling the comfort lining, be sure the lining is properly positioned along the inside shape of the EPS (a.k.a. Styrofoam) liner. If the comfort lining is not properly installed, the frame of the comfort lining may fold when you put on and take off the helmet, which may injure your skin, etc. Whenever you feel something is wrong with the comfort lining, check that the lining is properly installed.



**URL: <http://www.arai.co.jp>**

**Contact to**

**ARAI HELMET, LIMITED**

12 AZUMA-CHO, 2-CHOME

OMIYA, SAITAMA 330-0841

JAPAN

**ARAI HELMET (AMERICAS), INC.**

P.O. BOX 787

ALLENTOWN, PA 18051-0787

U.S.A.

**ARAI HELMET (EUROPE), B.V.**

P.O. BOX 112

3870 CC HOEVELAKEN

THE NETHERLANDS

Helmet Specifications subject to Change Without Notice.